

NEW PRODUCTS FOR 2012

Volume 21NP - \$1.00

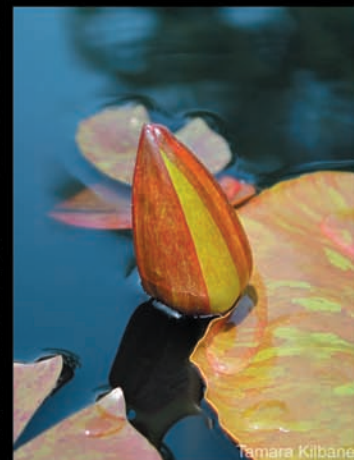
FOURTH GENERATION NURSERY INCORPORATED

"Your One Stop Water Gardening Source"

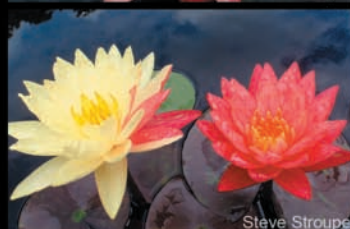
www.FGNSales.com

Nymphaea 'Wanvisa'

This stunning waterlily was voted the best overall Waterlily by the IWGS in 2010. This is the very first time ever that the competition for best overall waterlily has been won by a Hardy Waterlily. We have this unique plant available now. Quantities are going to be limited so be sure to order this one early for 2012.



The Many Faces of *Nymphaea 'Wanvisa'*
www.iwgs.org



PondLogic Aeration Kits

These aeration kits are designed with quality, performance and efficiency as top priority. If you are looking for the best water garden aerator on the market, this is it. These aeration kits work great in the hot summers as well as the cold winters. A small faux rock cover can be used to protect them from the elements outdoors.

AMX-PA2



AMX-PA2 - PondAir 2 - Aerates Ponds up to 1,000 gal

INCLUDES:

High-efficiency, dual-output compressor that uses only 4 watts with a max air flow of .15 CFM, 2 30' rolls of black vinyl tubing, 2 blue airstones and 2 check valves

AMX-PA4



AMX-PA4 - PondAir 4 - Aerates Ponds up to 4,000 gal

INCLUDES:

High-efficiency, quad-output compressor that uses only 8 watts with a max air flow of .31 CFM, 4 30' rolls of black vinyl tubing, 4 blue airstones and 4 check valves.

AMX-KA1



AMX-KA1- KoiAir 1 - Aerates Ponds from 2,000 to 8,000 gallons

INCLUDES:

KA-20 high efficiency compressor uses only 17 watts with a max air flow of 0.8 CFM, 25' - 3/8" weighted airline, one 2 membrane stick diffuser plate and fittings.

AMX-KA2- KoiAir 2 - Aerates Ponds from 8,000 to 16,000 gallons

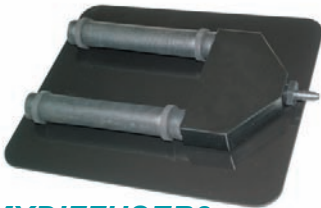
INCLUDES:

KA-40 high-efficiency compressor, dual-air control valves and uses only 35 watts with a max air flow of 1.7 CFM, 50' - 3/8" weighted airline, two 2 membrane stick diffuser plate and fittings.



AMX-KA2

AMXDIFFUSER2



AMXDIFFUSER2 - Diffuser Plate Assembly with 2 membrane sticks

Diffuser Plate Assembly utilizes a sturdy base plate and 1-piece weighted distribution block. The distribution block incorporates a 3/8" barbed inlet for quick hook-up to EasySet™ airline while providing threaded female outlets to accommodate the 2 membrane diffuser sticks. Virtually maintenance-free, membrane diffuser sticks resist clogging and their flexibility eliminates the possibilities of cracking and leaking.

AMXH- Blue Heron Decoy

Dimensions - 23"L x 7"W x 29"H

Weight - 2½ Pounds

Keep Blue Herons from calling your pond "home" with the Blue Heron Decoy. The Blue Herons are territorial and once a heron notices that your decoy has laid claim to your pond it will look elsewhere for a spot with less competition. The key to any effective decoy is to make it seem as real as possible. This decoy is texture molded and painted with natural colors to create a convincing faux heron. If you frequently relocate the decoy around your pond it will add to its effectiveness.

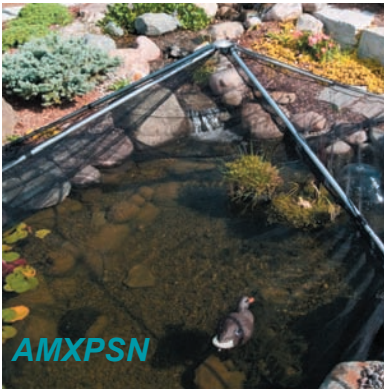


AMXTRS- Pond Logic® TruRock™ - Small

Exterior Dimensions - 16"L x 14"W x 10"H

Weight - 5½ Pounds

Protect unsightly yard blemishes and valuable pond equipment with the Pond Logic® TruRock. Constructed from rugged fiberglass materials, they have a weather-proof textured finish and rock-hard construction making the TruRock™ not only a viable décor item, but a protective cover as well. This size rock will fit the PondAir and KoiAir aeration pumps and is vented to allow air circulation.



AMXPSN - Pond Shelter Net

Frame Footprint - 14' x 14'

Netting Dimensions - 20'L x 20'W x 1/4" Mesh

Protect your pond from troublesome leaves, debris and predators with the Pond Logic® PondShelter™. This net is designed to be fully adjustable, with a rugged rust-proof aluminum frame and tough black mesh netting. Each of the 4 legs can be extended and locked-to-length and is hinged to the center-hub to adjust net pitch and discourage debris accumulation. Comes with 30 metal stakes or you can use the drawstring at the base of the black mesh netting to wrap around the perimeter of your pond.

See our complete catalog at www.FGNSales.com

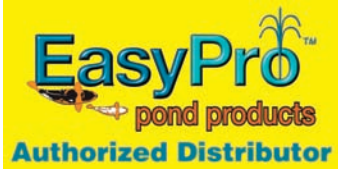
EasyPro



EPDFWB48 - Waterfall Basin

1/2 Round Basin for Waterfalls
Ideal for use with wall block!

- Can be installed on decks, patios, indoors - all above grade or buried
- Half circle design fits snug to wall
- Includes anti-splash strip - minimizes water loss
- Use an auto-fill valve to maintain water level
- Roto-molded, one piece design - super easy to install
- 1" threaded outlet
- 48"L x 24"W x 15 1/2"H



EPSBC50- Pond seal 50#

Revolutionary new way to seal leaking ponds, dikes, dams, spillways, etc. Sodium bentonite clay bonded to limestone aggregate creates a small rocklike "nugget" that sinks directly to pond bottom.

- Seals leaks without draining the pond
- Clay particles swell when wet, creating a solid layer of leak protection
- Great for sealing around intake pipes, muskrat holes, cuts and tears in liners
- Eco-friendly - all earthen ingredients, will not alter water chemistry
- Apply at five pounds per square foot for a 3/4" thick coverage or ten pounds per square foot for 1 1/2" thick coverage

ProEco Products

The SP Series pumps are perfectly suited for all waterfall, stream and fountain applications. The Split Tube hybrid motor design makes these pumps an ideal blend of performance and efficiency. These pumps also utilize asynchronous technology which means that they are electronically controllable. The benefit of being electronically controllable is that the output is completely adjustable and the pump only uses the power necessary for the desired flow.

- Asynchronous motor.
- Hybrid mag drive pump.
- Prefilter included.
- Thermally protected.
- Low power consumption.
- Submersible or in line.



PROSP2200 - SP Pump 2200 gph

PROSP3700 - SP Pump 3700 gph

Power Consumption (watts)	198	170		
Max. Flow Rate (gph)	2,200	3,700		
Max.Head (ft)	22	17		
Outlet	1"	1 1/2"		
Inlet	1"	1 1/2"		
Power Cable Length (ft)	33'	33'		
Dimensions (in)	13x4.5x6	13x4.5x6		
Warranty	5 Years	5 Years		
Pump Performance Chart				
	5'	10'	15'	20'
SP-2200	2000	1300	1000	200
SP-3700	3300	2200	700	-

EASY-LINER Liquid Rubber Liner

- Easy Liner – liquid liner patch and sealer
- Easy to apply, use a brush roller or squeegee
- Excellent UV, adhesion and chemical resistance
- Fish Safe, water based, environmentally friendly and no VOC's
- Resists cracking, chipping, peeling and abrasion

PROL1 - Easy Liner – 1 pint

PROL1gal - Easy Liner –1 gallon

PROL5ga l - Easy Liner – 5 gallon



PROLA- EPDM Liner Adhesive - 10oz tube

Liner adhesive for use in underwater applications



PROECO
PRODUCTS

Rainwater Harvesting



AWGRHCRU - Clean Rain Ultra Downspout

Dimensions: 8.25"L x 9"W x 31"H
 Inlet / Outlet: 2" x 3" and 3" x 4" downspout - 3" and 4" sch 40
 Diverter Outlet: Garden hose, flex pipe and 3" sch 40

- Collects water from downspouts
- Rain Head deflects leaves and debris
- First flush water diverter prevents contaminants in the initial surge of water from being collected
- Includes stainless steel mosquito proof screen
- Can be mounted at any height for easy maintenance



Hydro Activated Filtration™ technology uses the rainwater's force to deflect leaves and debris off the screen.

Clean Rain Ultra™ works automatically for every rainfall event.

The cover and cap provide a stylish, integrated finish and in colder climates, avert snow.

An easily accessible on/off switch to direct your rainwater for collection or return to normal downspout functioning.

Specially designed overflow mechanism ensures excess water safely overflows down your downspout.

Smart Sense™ First Flush functionality ensures that the majority of contaminants from the roof are flushed down the downspout.

Smart Sense's self regulating valve automatically adjusts to divert the optimum amount of dirty rainwater based on the intensity of the rainfall event.

The hose outlet fits standard garden, pool and sump hoses and the cap removes to fit 3" Schedule 40 pipe.



AWGRHDIV12 - Submersible Pressure Pump

Dimensions: 6"L x 6"W x 19"H
 Cord Length: 48'
 Volts: 115
 Watts: 1100
 Max Flow: 29 gpm
 Max Pressure: 65 psi

- Extremely reliable and easy to install
- Built in pressure switch and flow sensor
- Equipped with dry-run protection and internal non-return valve
- Automatically starts and stops when taps are opened
- Delivers constant pressure and flow rates

AWGRHEBS10 - External Pressure Pump

Dimensions: 18"L x 11"W x 13"H
 Cord Length: 5'
 Volts: 115
 Watts: 1000
 Max Flow: 22 gpm
 Max Pressure: 64 psi

- Incredibly quiet, self priming, water cooled pump
- Built in pressure switch and flow sensor
- Equipped with dry-run protection and built in non-return valve
- Automatically starts and stops when taps are opened
- Delivers constant pressure and flow rates



AWGRHTG - Tank Gauge

Dimensions: 3.75"L x 2.75"W x 4.5"H
 Outlet: Requires 1.25" hole for installation

- Monitors water level of a storage system
- Quick and easy to install, suitable for all new and existing tanks
- Easy to read dial face with empty and full indicators
- Can be calibrated for holding systems up to 8' deep



ShinMaywa



SH-XP075 - ShinMaywa 1 HP High Flow Pump

- Rated for continuous duty
- 2 Year factory warranty
- High Efficiency
- Corrosion Resistant
- 2" Discharge
- 115 Volt Single Phase Motor
- Dual Shaft Seals
- Thermal Overload Protection
- 1-1/4" Solids Handling
- 32' Power Cable
- 3450 RPM

The Norus XP is a high flow submersible pump. Featuring a super efficient impeller design that produces high flow rates for dramatic water features. Constructed of non corrosive stainless steel and FRP plastic, for providing excellent corrosion resistance and longer pump life . Exactly what you've come to expect from ShinMaywa